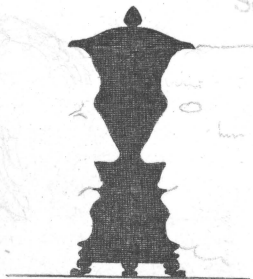


A
CONCHOLOGICAL
DICTIONARY
OF
The British Islands.

BY
WILLIAM TURTON, M.D.

ASSISTED BY
HIS DAUGHTER.

*Division of Mollusks
Sectional Library*



"Hæc studia adolescentiam alunt, senectutem oblectant, secundas
res ornant, adversis solatium et perfugium præbent."

London :
PRINTED FOR JOHN BOOTH,
DUKE STREET, PORTLAND PLACE.

1819.

5. *Voluta reflexa.* *Reflected Volute.*

Shell oblong-oval, tapering to a very fine point, glossy brownish horn-color, semitransparent, irregularly but distinctly striate longitudinally: spires nine, rounded and well defined by the line of separation, the first large and covering more than half the shell: aperture oblong-oval, contracted to a point at the upper end; the outer-lip thick and reflected, with five small teeth on the inside; pillar-lip somewhat spread and turned back so as to form a small perforation behind it, with three strong folds and a tubercle above them: length more than a quarter of an inch; breadth a third of its length.

Taken in a shrimp net on the sands at Exmouth, and is in the cabinet of Mrs. C. W. Loscombe. *v. m.*

6. *Voluta fusiformis.* *Spindle Volute.*

Shell glossy-white, transparent, quite smooth, swollen in the middle and tapering to both ends: spires four, very flat and only defined by a fine lucid circular line, the first very large and occupying more than three-fourths of the shell, inflated in the middle and tapering towards the base which is rounded and a little reflected: aperture oblong-oval, reaching to the top of the primary volution; the outer-lip very thin and plain; pillar-lip smooth, not spreading nor reflected, without teeth or folds, but furnished with a small oblique gibbosity in the middle: length three-tenths of an inch; breadth half its length.

We were in some doubt whether to place this new and elegant species as a *Murex* or a *Voluta*; but the polished surface, the aperture, and the general contour of the shell inclined us to the latter family. It was found on the sands at Exmouth, and is in the cabinet of Mrs. C. W. Loscombe. *v. n.*

7. *Voluta pallida.* *Pale Volute.*

Lister, pl. 714. f. 70, outer fig.—*Da Costa*, pl. 2. f. 7.

Bulla pallida. *Donovan*, pl. 66.

Shell cylindrical, obtuse, glossy-white, smooth, with hardly any distinct spire at the end, the upper volution being extremely small and scarcely defined by the line of separation: aperture narrow, reaching nearly the whole length